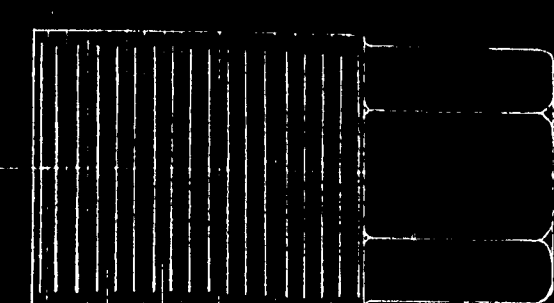


10 3/4" Friction



1 1/2" Galv Bridge Strand Right Lay

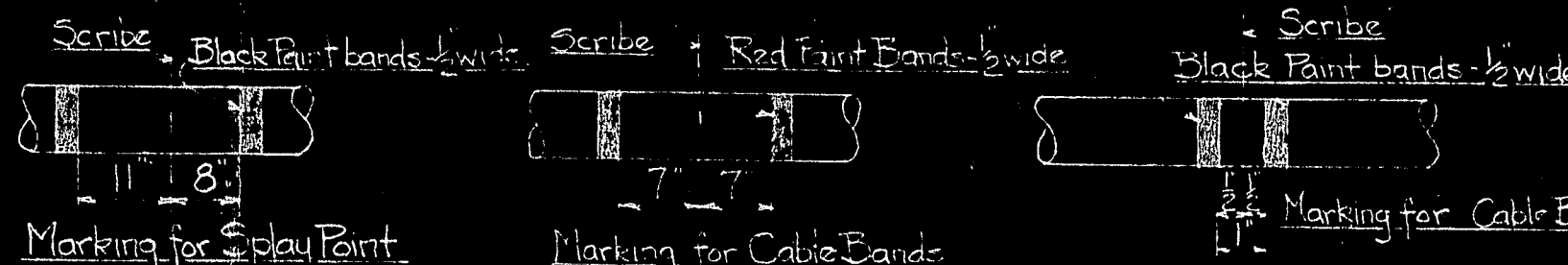
11' 15'-0 3/16" 111'-8 3/16" 126'-8 3/16"

28'-7 1/4" 28'-8 3/8" 28'-9 1/8" 28'-11 1/2" 29'-1 1/2" 29'-3 1/8" 29'-5 1/8" 29'-7 1/8" 29'-9 1/8" 30'-0" 30'-2 1/8" 30'-5 1/8" 30'-7 1/8" 30'-10 1/8" 31'-1 1/8" 40'-4 1/8" 38'-1 1/8" 29'-9 1/8" 29'-7 1/8" 29'-4 1/8" 29'-2 1/8" 29'-1" 28'-11 1/4" 28'-9 1/4" 28'-8 1/4" 28'-6 1/4" 28'-4 1/4" 28'-3 1/4" 28'-2 1/4" 28'-1 1/4" 28'-0 1/4" 28'-0 1/4" 28'-0 1/4"

1194'-11 5/8"

553'-8 5/16"

MARKING OF BR61-1A



BR61-1A - MAIN CABLE STRAND (#12)

Measured at 91350# tension at 68°F
Longitudinal stripe painted on full length during time of prestressing.

C - Cut Length of Strand
B - Length between socket faces

1 1/2" Galv Bridge Strand
Scribe Crown of lower Saddle
Black paint bands 1/2" wide

A - Overall Length

MAIN CABLE STRANDS

Measured at 91350# tension at 68°F

MARK	A	B	C	B ₂	D	E	F	LOCATION	STRAND LAY
BR61-1B	2391'-8 3/8"	2389'-10 3/8"	2391'-8 3/8"	1194'-11 5/8"	126'-8 1/4"	514'-6 3/8"	553'-8 5/16"	1+3	Right
BR61-1C	2391'-7 1/8"	2389'-9 1/8"	2391'-7 1/8"	1194'-10 1/8"	126'-7 1/4"	514'-6 3/8"	553'-8 5/16"	2	Right
BR61-1D	2391'-8 3/8"	2389'-10 3/8"	2391'-7 1/8"	1194'-11 5/8"	126'-8 1/4"	514'-6 3/8"	553'-8 5/16"	4+7	Left
BR61-1E	2391'-6 3/8"	2389'-8 3/8"	2391'-6 3/8"	1194'-10 1/8"	126'-7 1/4"	514'-6 3/8"	553'-8 5/16"	5+6	Left
BR61-1F	2391'-6 3/8"	2389'-8 3/8"	2391'-5 3/8"	1194'-10 1/8"	126'-6 3/4"	514'-6 3/8"	553'-8 5/16"	10	Right
BR61-1G	2391'-7 1/8"	2389'-9 1/8"	2391'-6 3/8"	1194'-10 1/8"	126'-7 1/4"	514'-6 3/8"	553'-8 5/16"	9+11	Right
BR61-1H	2391'-9 1/8"	2389'-11 1/8"	2391'-9 1/8"	1194'-11 5/8"	126'-8 1/4"	514'-6 3/8"	553'-8 5/16"	8	Right
BR61-1J	2391'-7 1/8"	2389'-9 1/8"	2391'-7 1/8"	1194'-10 1/8"	126'-7 1/4"	514'-6 3/8"	553'-8 5/16"	14+15	Left
BR61-1K	2391'-9 1/8"	2389'-11 1/8"	2391'-8 3/8"	1194'-11 5/8"	126'-8 1/4"	514'-6 3/8"	553'-8 5/16"	13+16	Left
BR61-1L	2391'-9 1/8"	2389'-11 1/8"	2391'-9 1/8"	1194'-11 5/8"	126'-8 1/4"	514'-6 3/8"	553'-8 5/16"	18	Right
BR61-1M	2391'-10 3/8"	2390'-0 3/8"	2391'-10 3/8"	1195'-0 3/8"	126'-9 1/4"	514'-6 3/8"	553'-8 5/16"	17+19	Right

17 18 19
13 14 15 16
8 9 10 11 12
4 5 6 7
1 2 3

STRAND LOCATION DIAGRAM

Looking South for both cables.

PRELIMINARY PRINT
For approval of SLEEVE BR61-1N and SOCKET BR61-1P only.
APPROVED: AFS
DATE: Feb 8 1938

DETAILED CASTING

CABLE BENT SADDLE

Strand #2 marked on this line

MAIN TOWER SADDLE

DETAILED CASTING

DETAILED CASTING

DETAILED CASTING

DETAILED CASTING

DETAILED CASTING

DETAILED CASTING

DETAILED CASTING

DETAILED CASTING

DETAILED CASTING

DETAILED CASTING

DETAILED CASTING

DETAILED CASTING

DETAILED CASTING

DETAILED CASTING

DETAILED CASTING

DETAILED CASTING

DETAILED CASTING

DETAILED CASTING

DETAILED CASTING

DETAILED CASTING

DETAILED CASTING

DETAILED CASTING

DETAILED CASTING

DETAILED CASTING

DETAILED CASTING

DETAILED CASTING

DETAILED CASTING

DETAILED CASTING

DETAILED CASTING

DETAILED CASTING

DETAILED CASTING

DETAILED CASTING

DETAILED CASTING

DETAILED CASTING

DETAILED CASTING

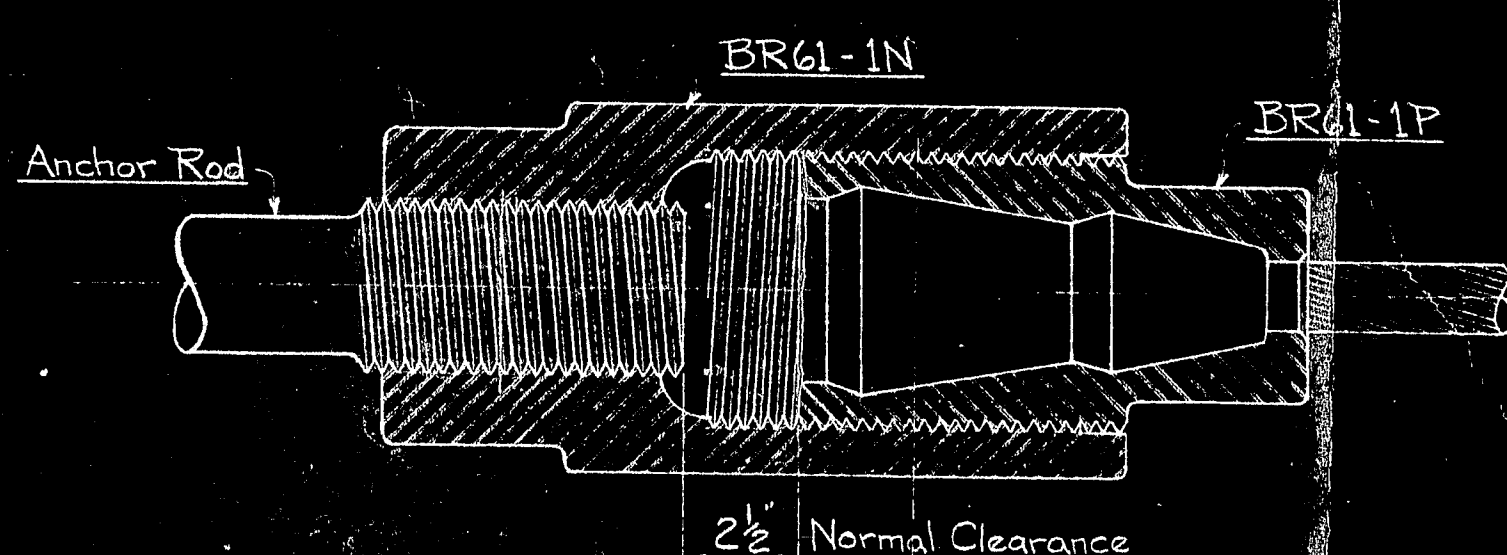
DETAILED CASTING

DETAILED CASTING

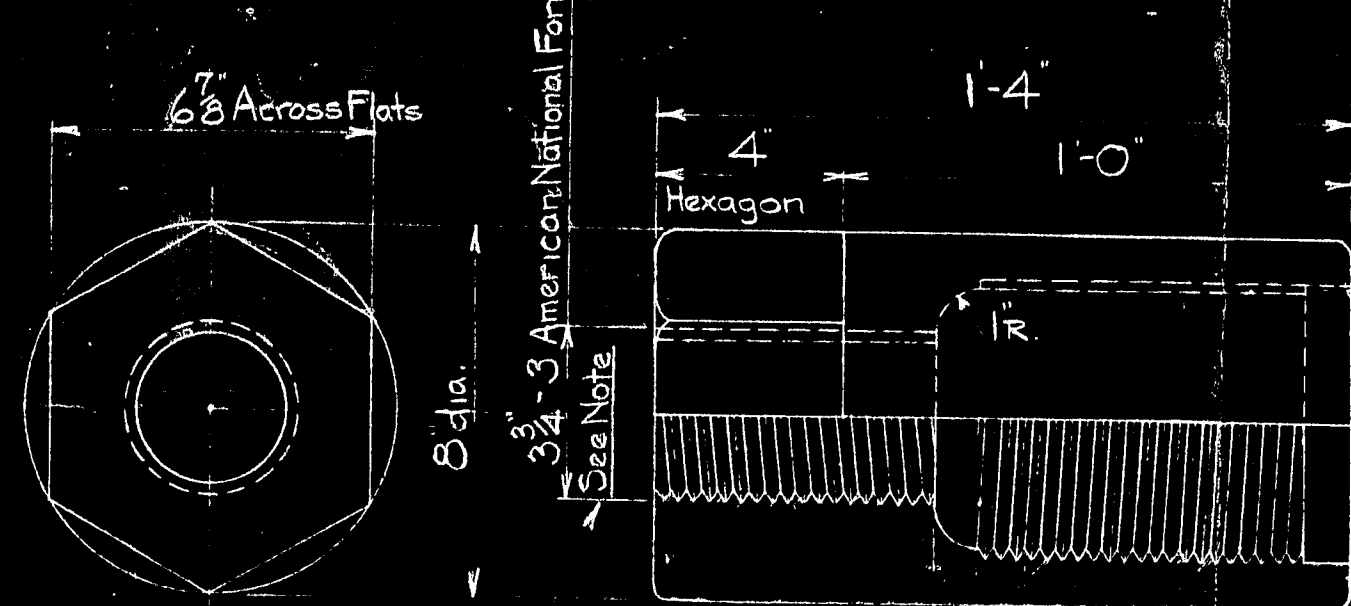
DETAILED CASTING

DETAILED CASTING

DETAILED CASTING



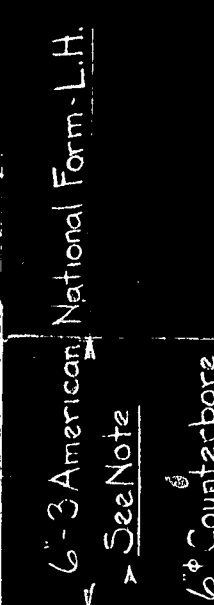
MAIN CABLE STRAND ANCHORAGE CONNECTION



Note - Threads to fit plug gage.
Plug gage to suit ring gage used by manufacturer of anchor bars

BR61-1N-SLEEVE

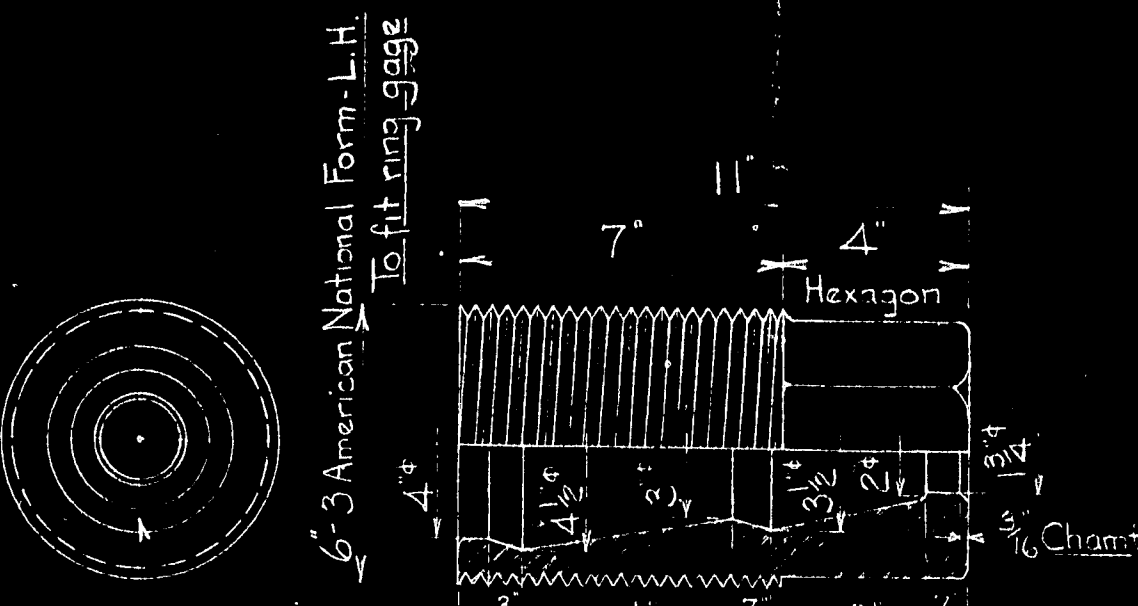
Matl - Cast Steel Annealed. Specification same as Std. Specifications for Highway Bridges of the American Assn. of State Highway Officials, 1935 edition.



Note - Threads to fit plug gage.
Plug gage to suit ring gage used by manufacturer of sockets.

BR61-1P-SOCKET

Matl - Cast Steel Annealed. Specification same as Std. Specifications for Highway Bridges of the American Assn. of State Highway Officials, 1935 edition.



Note - Sand blast center core to insure clean smooth cast.

